

# MC Next 2026

## Frequently Asked Questions

## Office

**MOUS Software B.V.**

Eltenseweg 8-J

NL 7039 AA Stokkum

The Netherlands

Phone: +31 (0) 314 665385

[www.moussoftware.com](http://www.moussoftware.com)

# Contents

<b>Frequently Asked Questions.....</b>	<b>4</b>
1 The MC Next toolbar in CAD is not displayed.....	4
2 Export background file and points in CAD is not working .....	8
3 The message “Unable to access Sentinel Run-time Environment (H0033)” appears .....	9

# Frequently Asked Questions

This document describe the most frequently asked questions with the MC Next software.

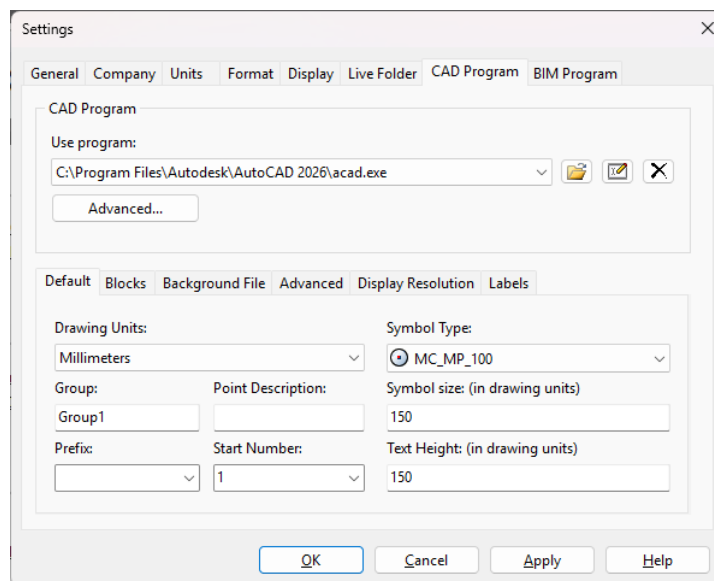
## 1 The MC Next toolbar in CAD is not displayed

---

If you want to display MC Next in the Ribbon of your CAD software again, then do the following;

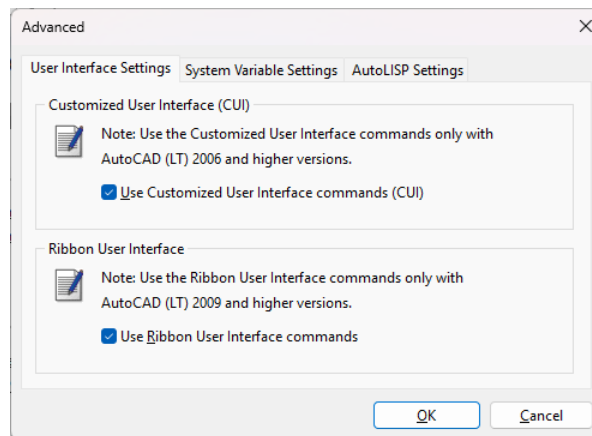
1. First close your CAD software.
2. Start the MC Next software, if you have not already done so.
3. From the *Ribbon Quick Access Toolbar* at the top of the screen, select *Settings*.

The *Settings* dialog appears.

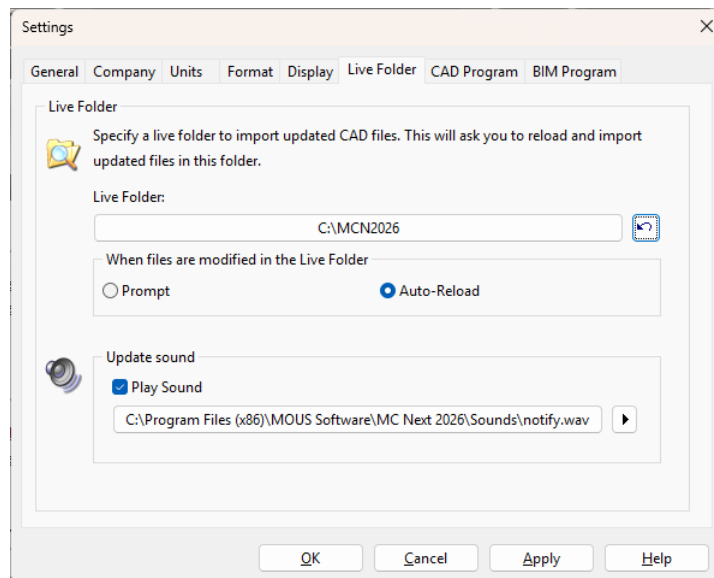



4. Select the *CAD Program* tab.
5. Click the **Advanced** button under the *Use Program* drop-down list.

The *Advanced Settings* dialog appears.



6. Check the option *Use Ribbon User Interface commands* and then press **OK**.
7. Select the *Live Folder* tab.



8. Click the **Reset Live Folder**  button and then Press **OK**.
9. From the *Ribbon* at the top of the screen, select *Prepare points in CAD*.

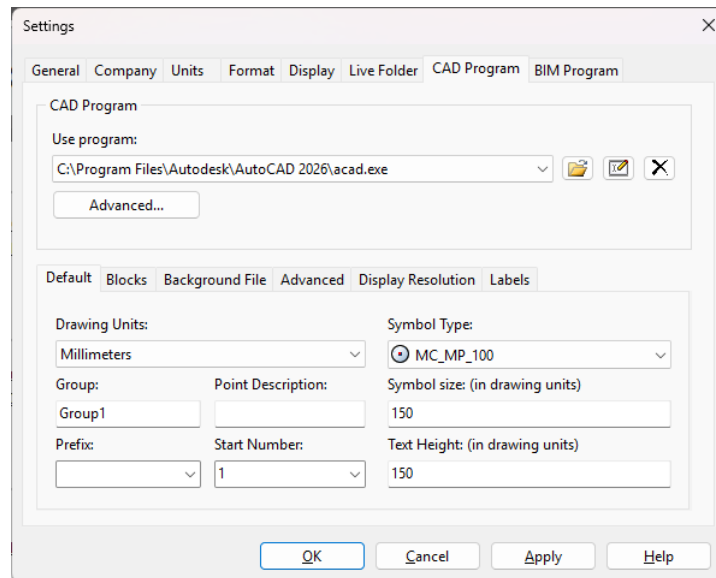
Your CAD software automatically starts and MC Next should be visible again in the Ribbon of your CAD software.

If you want to display the (classic) MC Next toolbar in CAD again, then do the following;

1. First close your CAD software.
2. Start the MC Next software, if you have not already done so.

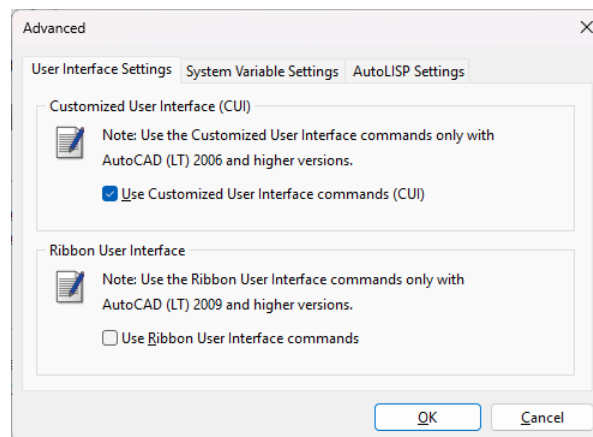
- From the *Ribbon Quick Access Toolbar* at the top of the screen, select *Settings*.

The *Settings* dialog appears.



- Select the *CAD Program* tab.
- Click the **Advanced** button under the *Use Program* drop-down list.

The *Advanced Settings* dialog appears.



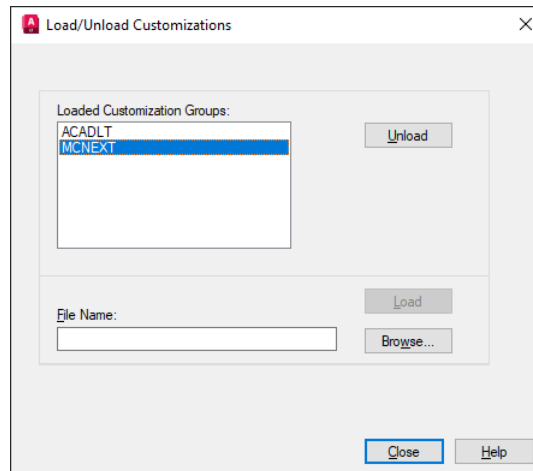
- Uncheck the option *Use Ribbon User Interface commands*. Press **OK** and then **OK** again.
- From the *Ribbon* at the top of the screen, select *Prepare points in CAD*.

Your CAD software automatically starts and the MC Next toolbar should be visible again in your CAD software.

If the MC Next toolbar is still not visible in your CAD software, try the following steps:

1. In the CAD software, key in the command: *CUILOAD* and then press **Enter**.

The Load/Unload Customizations dialog appears.



2. Select *MCNEXT* in the list, if available, and then click on the **Unload** button.
3. Click on the **Browse** button and then navigate to the following folder:  
“c:\MCN<Version Number>”
  - a. In the *files of type* drop-down list:

#### **Ribbon**

Select *Legacy customization files (\*.cui)* if you would like to display MC Next in the Ribbon of your CAD software. Please note: do not select *Customization files (\*.cuix)*. Select “*mcACADAddOn.cui*” if you are working with plain AutoCAD or select “*mcACLTAddOn.cui*” if you are working with AutoCAD LT.

#### **Classic Toolbar**

Select *Legacy menu files (\*.mns; \*.mnu)* if you would like to display the classic MC Next toolbar in your CAD software. Select “*mcACADAddOn.mnu*” if you are working with plain AutoCAD or select “*mcACLTAddOn.mnu*” if you are working with AutoCAD LT.

- b. Click **Open** to open the file.
4. Click on the button **Load** and then click on the button **Close**.

MC Next should be visible again in your CAD software.

## 2 Export background file and points in CAD is not working

---

When Export background file and points in CAD is not working any more than most likely the CAD drawing file (. dwg) has become damaged or corrupt in some way. To recover the CAD drawing, follow these steps:


1. Start the MC Next software, if you have not already done so.
2. From the *Ribbon* at the top of the screen, select *Prepare Points in CAD*.

Your CAD software automatically starts and displays the MC Next toolbar.



3. In the CAD software, select *File / Open* and then navigate to the damaged or corrupt drawing file.
4. When the CAD drawing opens, press **[Ctrl + C]** (Copy to Clipboard in CAD).

The message *Select objects* appears.

5. In the drawing, drag a rectangular window around the area that you want to copy to the clipboard. For now, select the entire drawing and press **[Enter]**.
6. In the CAD software, select *File | New* to create a new drawing. Select a default Template for the drawing (“acadiso.dwt”) and then click **Open**.
7. When the new CAD drawing opens, right-click and a shortcut menu appears. From the shortcut menu, select *Clipboard* and then *Paste to Original Coordinates*.

8. On the MC Next toolbar, click the *Settings* button .

The Settings window appears:

9. Select the *drawing units* and then press **OK**.
10. On the MC Next toolbar, click the arrow on the Export Points button  and then click the Export Background File & Points button  on the pull-out menu.

The message *Select objects for background file* appears.


11. In the drawing, drag a rectangular window around the area to include in the background file. For now, select the entire drawing.
12. Press **[Enter]**.

The message *Background file is created* appears. The points are now exported to the MC Next software.

If the drawing persists with problems, try the following steps:

1. In the CAD software, select *File* | *Save as*.

The Save dialog appears.

- a. In the *files of type* drop-down list, select AutoCAD R12/LT2 DXF (\*.dxf).
  - b. In the *file name* field, key in a new name for the drawing.
  - c. Click **Save** to save the drawing.
2. Close the drawing.
  3. In the CAD software, select *File* | *Open* and navigate to the saved DXF file.
  4. When the CAD drawing opens, select *File* | *Save As* and save the drawing in DWG file format.
  5. On the MC Next toolbar, click the *Settings* button .

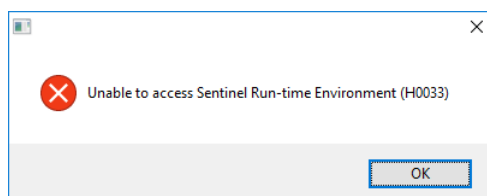
The Settings window appears.

6. Select the *drawing units* and then press **OK**.
7. Export the background file and points again to the MC Next software by choosing *Export background file and Points*.

### 3 The message “Unable to access Sentinel Run-time Environment (H0033)” appears

---

When you launch MC Next, the following message appears on the screen:



To recover the Sentinel Run-time Environment, try the following steps:

1. Reinstall the MC Next software.

Don't worry, you don't lose any settings. Download the installation package from our web site [www.moussoftware.com](http://www.moussoftware.com). Choose a location on your computer to store the setup file, then save and run the .msi file.

2. Select *Uninstall* and then click **Next**.

3. Follow the instructions in the wizard and then click **Finish**.
4. When the MC Next software is uninstalled, launch the .msi file again.
5. Follow the instructions in the wizard and then click **Finish**.

Launch MC Next and see if the message appears.

If the message still appears, then try the following steps:

1. Open Windows Explorer and navigate to the folder where your MC Next program is located (default *c:\Program Files (x86)\MOUS Software\MC Next <Version Number>*).
2. Go to the *HASP* folder and right-click on the file: *haspdinst.exe*
3. From the shortcut menu, select *Send to | Desktop (create shortcut)*.

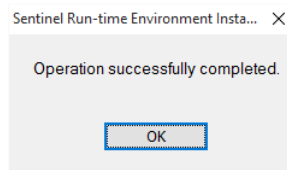
A shortcut is created on the desktop.

4. Go to the desktop and right-click on the shortcut icon. From the shortcut menu, select *Properties*.

The Properties window appears.

5. In the *Target* field, key in at the end (after the ”-sign) a **space** sign and then **-r** and then a **space** sign and then **-purge**.
6. Click **Apply** and then click **OK**.
7. Double click on the shortcut icon to run the executable.

This will remove the Sentinel Run-time Environment. When the Sentinel Run-time Environment is removed, the following message appears:



8. Right-click again on the shortcut icon. From the shortcut menu, select *Properties*.

The Properties window appears.

9. In the *Target* field, first delete **-r -purge** and then key in at the end (after the ”-sign) a **space** sign and then **-i**.
10. Click **Apply** and then click **OK**.

11. Double click on the shortcut icon to run the executable.

This will install the Sentinel Run-time Environment. When the Sentinel Run-time Environment is installed, the following message appears:

